



Preventing zoonotic
disease emergence

**ATELIER PREZODE
AFRIQUE AUSTRALE/EST
1 JUIN 2021**

**PREZODE WORKSHOP
AUSTRAL/EASTERN AFRICA
1st of JUNE 2021**

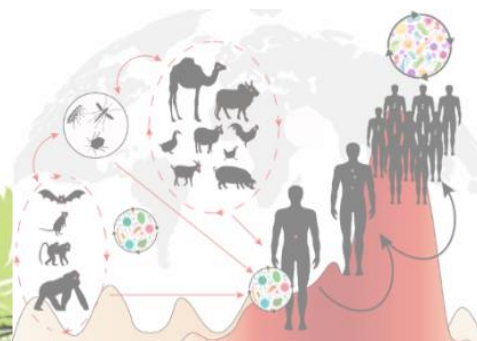
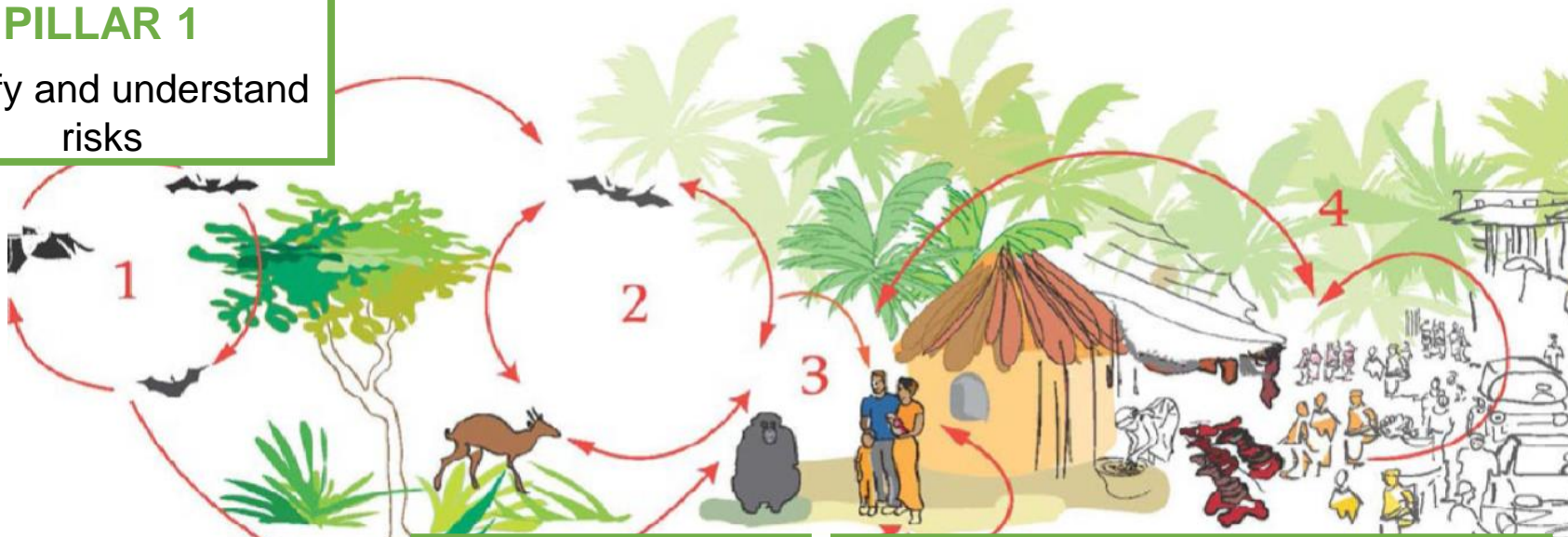
Workshop 1 : Synthesis

A decorative graphic in the top-left corner of the slide, featuring three overlapping circles in white, orange, and blue. Small colored dots are placed at the intersections of the circles.

PREZODE - Context

VISION AND OBJECTIVES

PILLAR 1
Identify and understand risks



@Chirara, Cirad

PILLAR 2
Risk reduction

PILLAR 3
Early detection and rapid response;
Socio-economic constraints

PILLAR 4
Scaling up emerging risks surveillance systems

PILAR 5 Engaging and empowering local and national stakeholders;
strengthening One Health networks

**IDENTIFY AND UNDERSTAND RISKS to
CO-DEVELOP SOLUTIONS TO REDUCE THEM**



**STENGHTENING EARLY WARNING
SYSTEMS, OPERATIONAL
FROM LOCAL TO GLOBAL**

30/06/2021

WHERE ARE WE? WHAT ARE THE NEXT STEPS

- Framing the initiative
- Launching the first national research program in France
- Co-developing the initiative with all the relevant stakeholders
 - Regional and national co-design workshops
 - Strategic scientific agenda and operational roadmap

FIRST FUNDINGS ACQUIRED

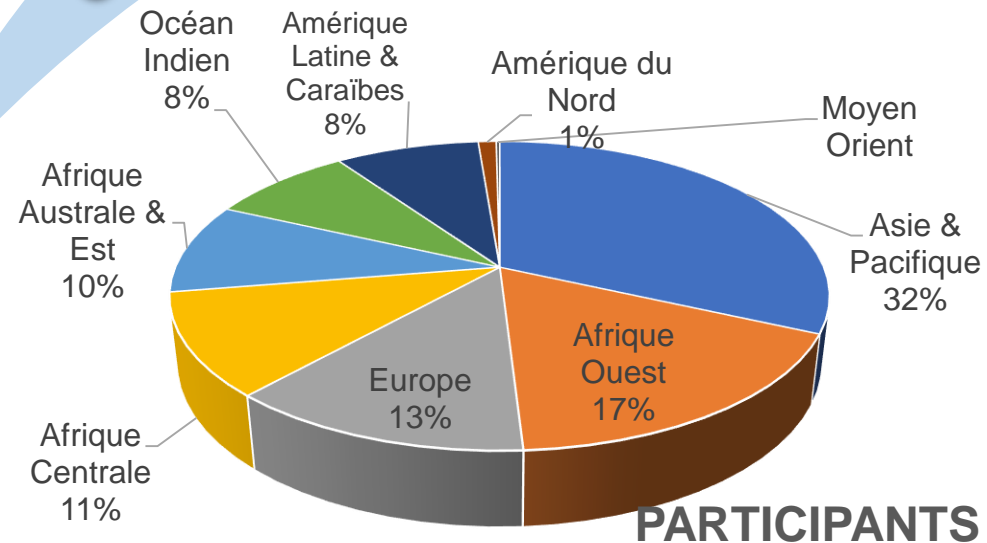
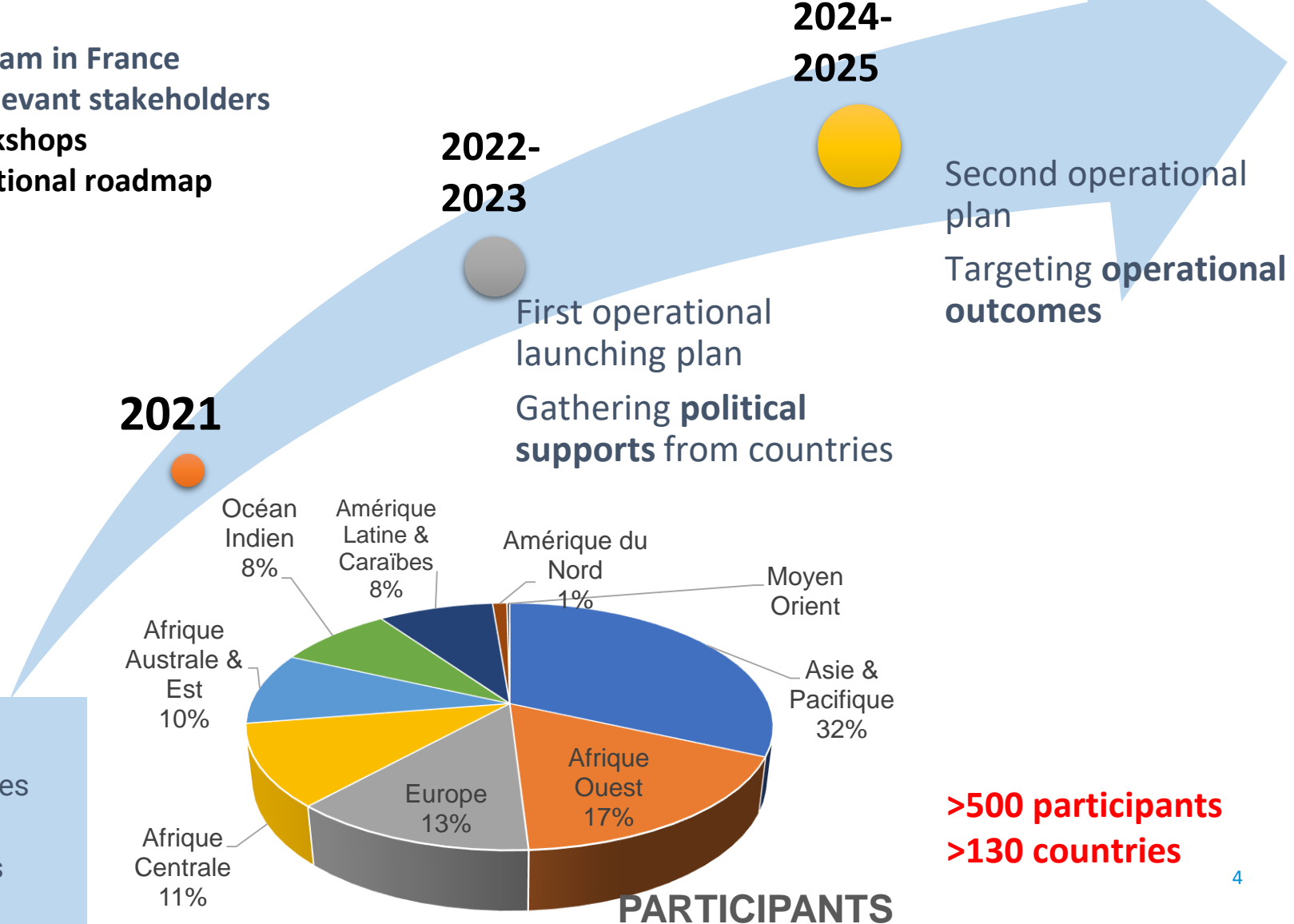
- MESRI PEPR 30M€
- AFD 30M€

INTERNATIONAL SUPPORT REQUIRED

- International organisations
- Donors
- Countries
- Sci & Dev partners

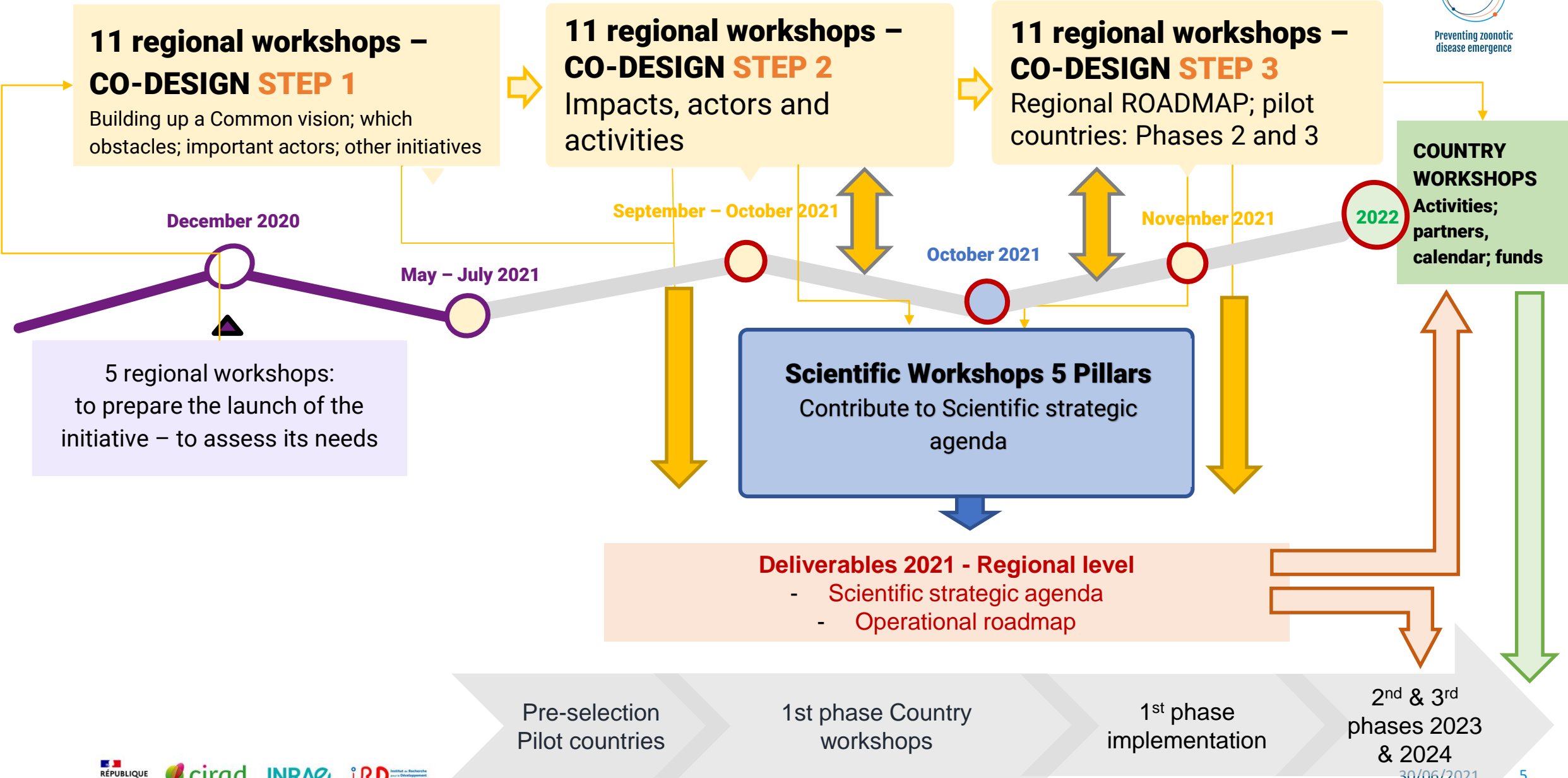
11 co-design regional workshops–

- STEP 1- Common vision, obstacles, other initiatives
- STEP 2 -Impacts, actors and activities
- STEP 3- Strategic scientific and operational plans



>500 participants
>130 countries

Co-design process 2020-2021



AFD Project Phase 1 Instruction calendar

OUR **RESEARCHERS** ARE **CHANGING** THE WAY THEY

ImpresS: comprendre les chemins de l'im...

THINK

PLAN

IMPACT CULTURE

SOCIAL

ENVIRONMENTAL

Regarder sur YouTube

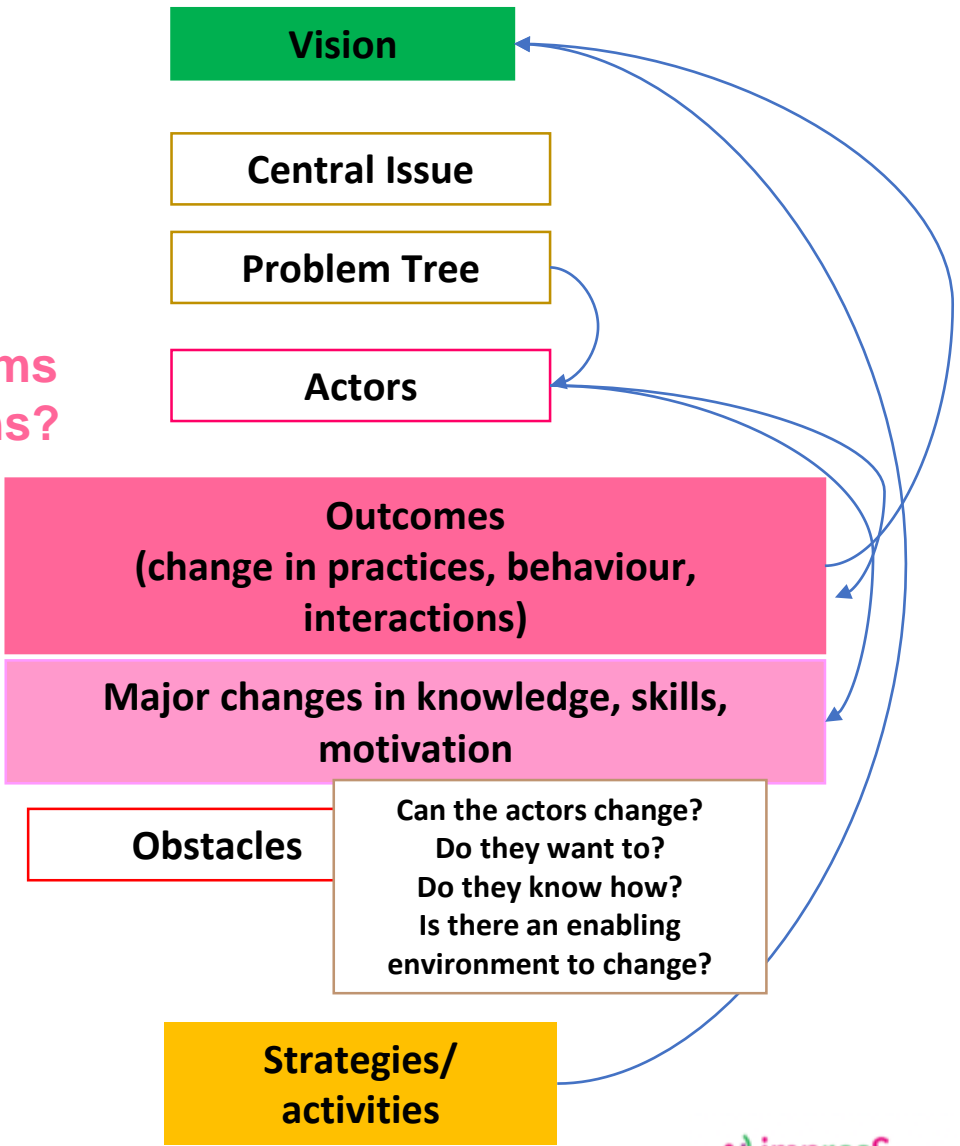
En promouvant une culture de l'impact à tous les niveaux de l'institution.

A VIDEO to Understand it all !

Web Link: <https://youtu.be/xS9qHY0I4gc>

CO-DESIGN METHODOLOGY – The different STEPS

- 1st workshop
 - What is the vision of the future to which we aim to contribute to?
 - What are the key problems that prevent this from being achieved?
- 2nd workshop
 - Who are the main actors of these problems and how are they impacted by our actions?
 - What are the desirable changes to solve these problems and achieve the vision ?
- 3rd workshop
 - What are the obstacles to these changes?
 - What strategies/actions can we implement to overcome these obstacles?



WORKSHOP 1 - Objectives

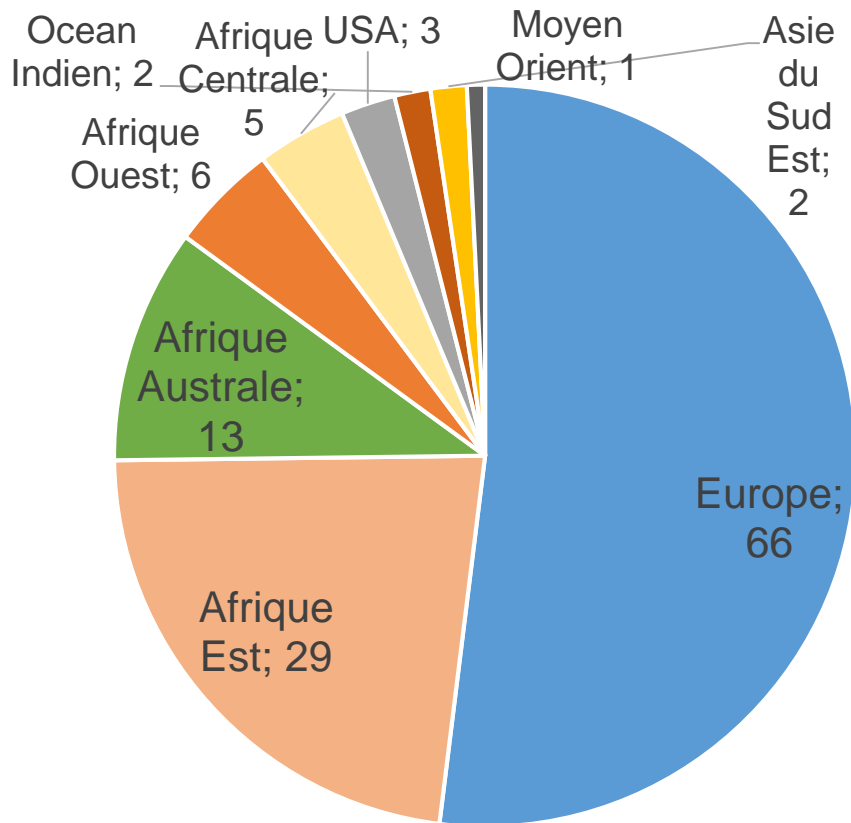
- **To build up a common vision of the initiative together** - based on the PREZODE values - its objectives and expected impacts but also its challenges and potential barriers;
- **To map and invite around the table all the relevant stakeholders** that would need to take part in this co-construction work;

A decorative graphic in the top-left corner of the slide. It features three overlapping circles: a white one, an orange one, and a blue one. Small colored dots (orange and blue) are placed at the intersections of the circles.

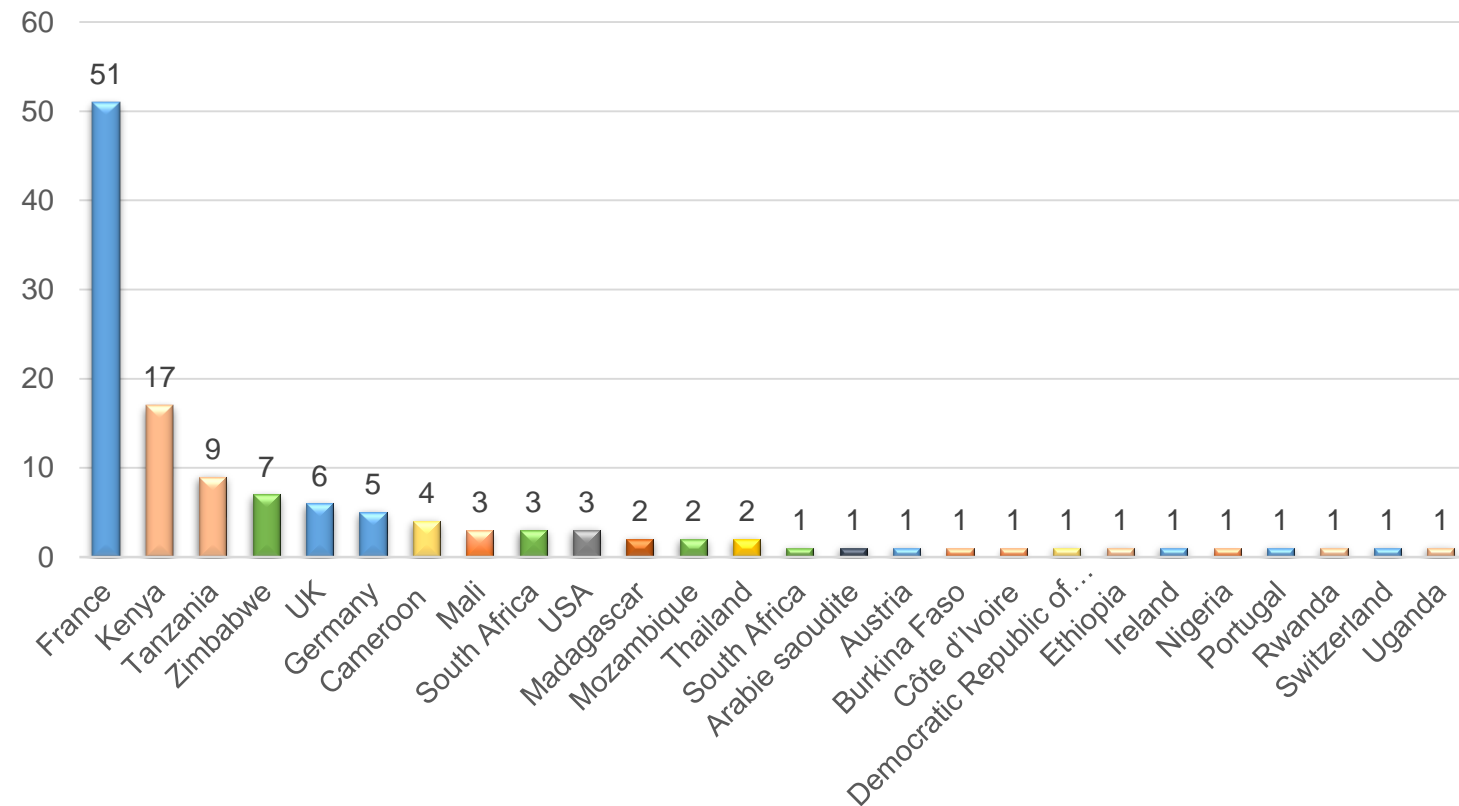
Participant Representation

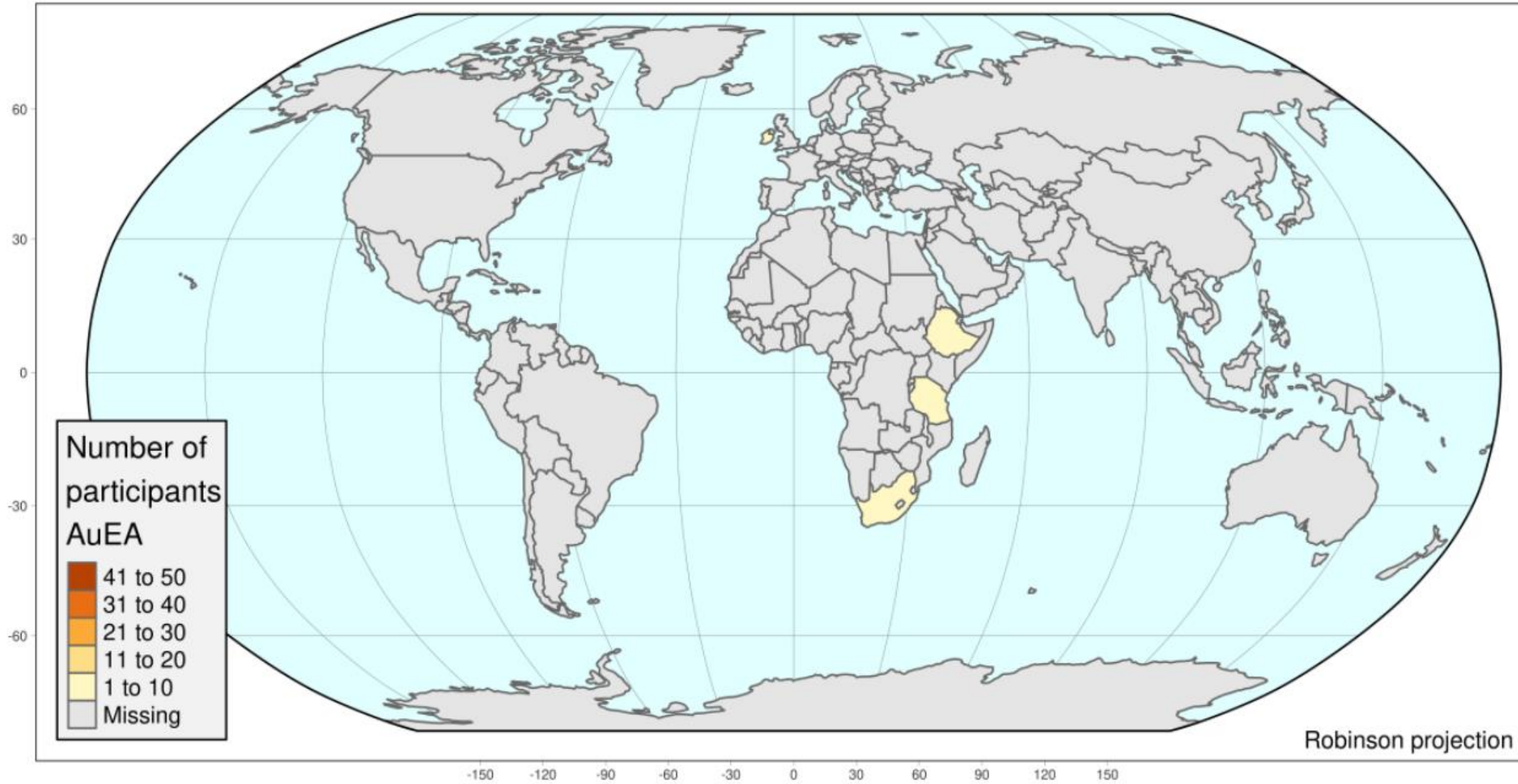
Afrique Australe & de l'Est / Austral and East Africa Co-design Workshop – 1st June 2021

127 Registered Participants
from 27 countries



TOTAL PAR PAYS







Workshop Outcomes

A decorative graphic in the top-left corner of the slide. It features three overlapping circles: a white one, an orange one, and a blue one. Small colored dots (orange and blue) are placed at the intersections of the circles.

A common Vision...

VISION proposal —————

Key elements :

- Food security
- Dialog/networks among stakeholders including science-society politics
- Improved control & surveillance systems
- Improved socio-ecosystem
- Livelihood
- Biodiversity
- Help decision making
- Territories protection, reducing animal-human interface conflicts.

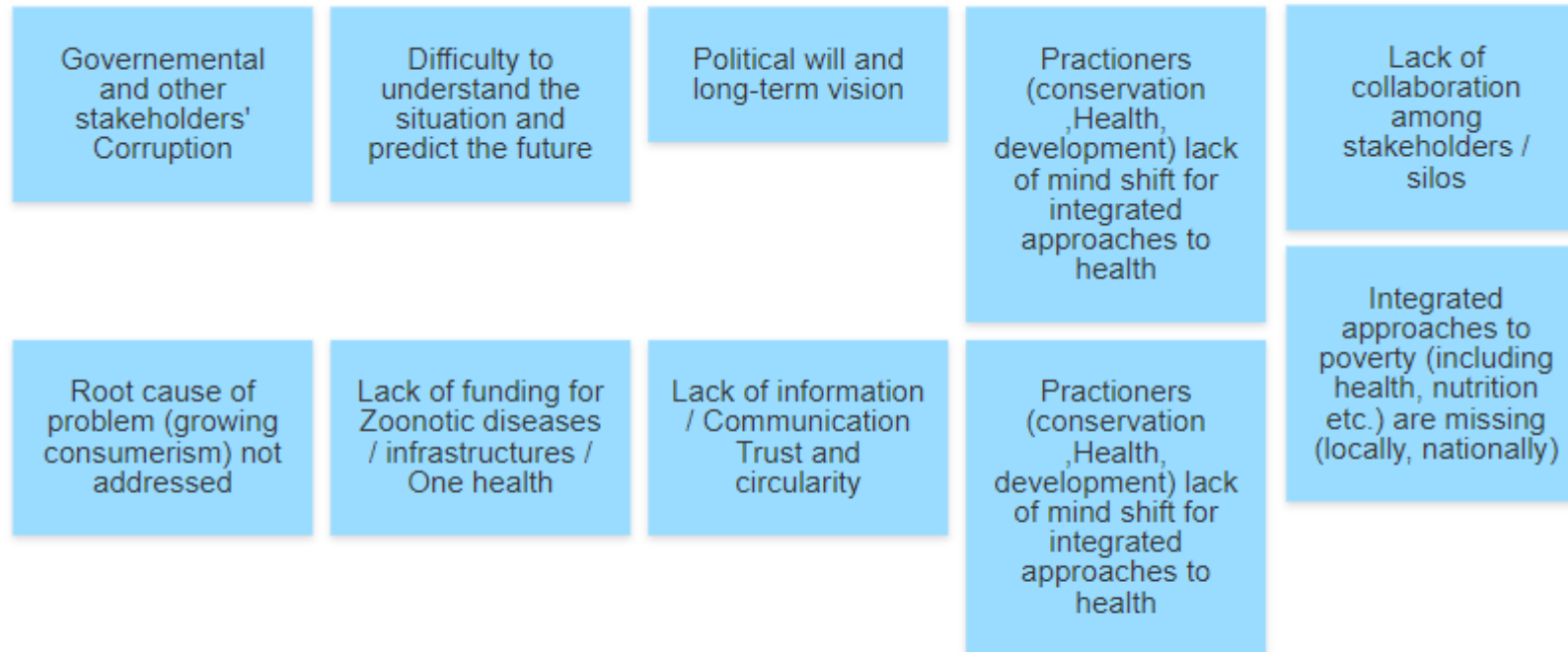
To ensure a healthy world with reduced or fewer zoonotic diseases and pandemic threats, with growing economies, food security and poorest communities livelihood anchored on sustainable ecosystems, protecting biodiversity and reducing conflicts at the animal-human interface; by strengthening dialog and networks between stakeholders including science-society-politics dialog, improving control and surveillance systems and ensuring a greater integration of biodiversity conservation into One Health approaches.

This sentence proposal came up from the brainstorming discussions (see Annex 1) and was validated by all the participants

A decorative graphic in the top-left corner of the slide, featuring three overlapping circles in white, orange, and blue, with small colored dots (orange and blue) placed at various points along the circles.

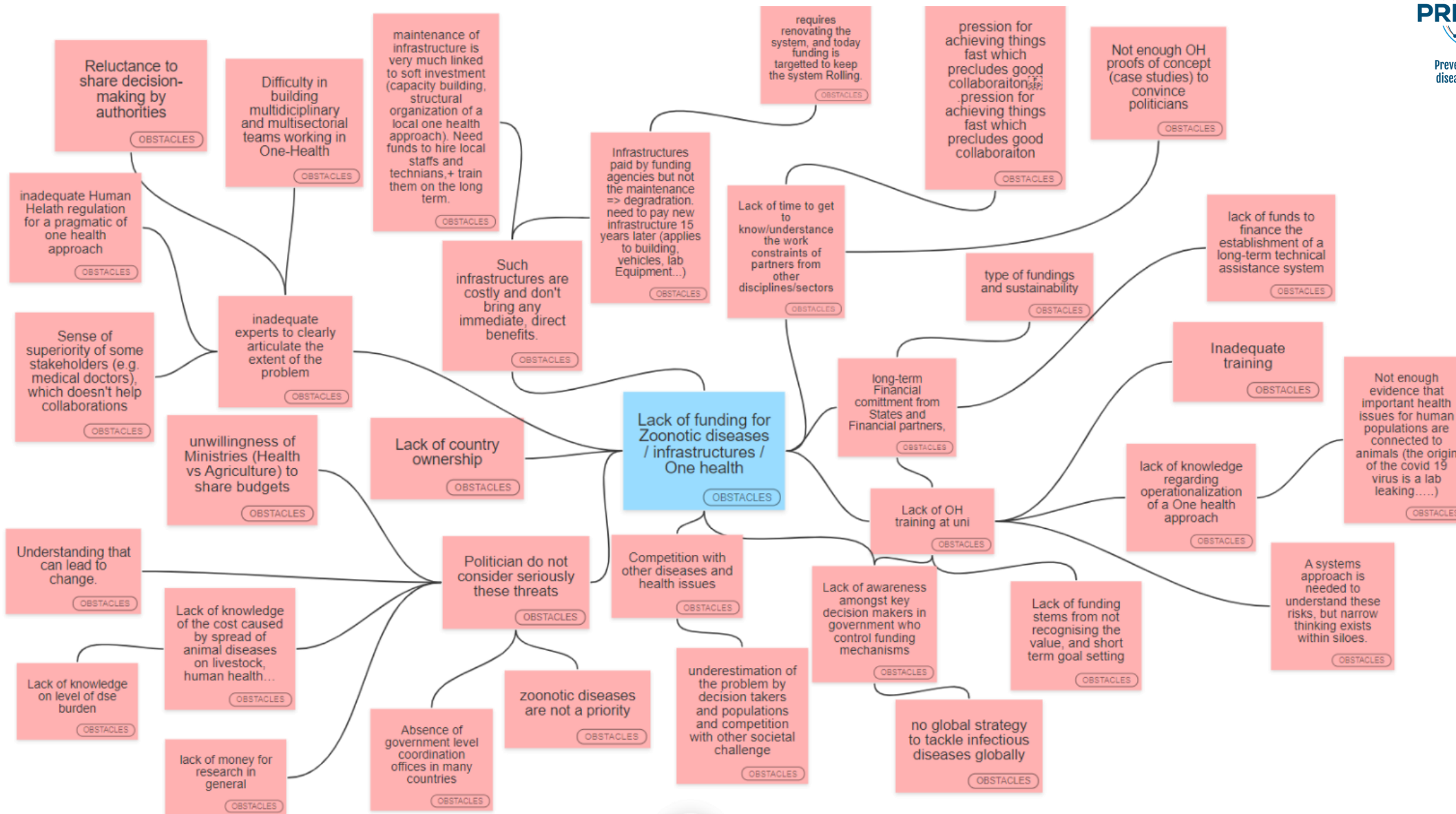
Barriers / Solutions

MAIN BARRIERS / OBSTACLES



- We then defined by a vote which problem we wanted to work on that day

Problem tree



HELP US to build th OTHER PROBLEM TREES in Klaxoon ...

Link to the Klaxoon network : <https://app.klaxoon.com/join/HFBRNTF35>

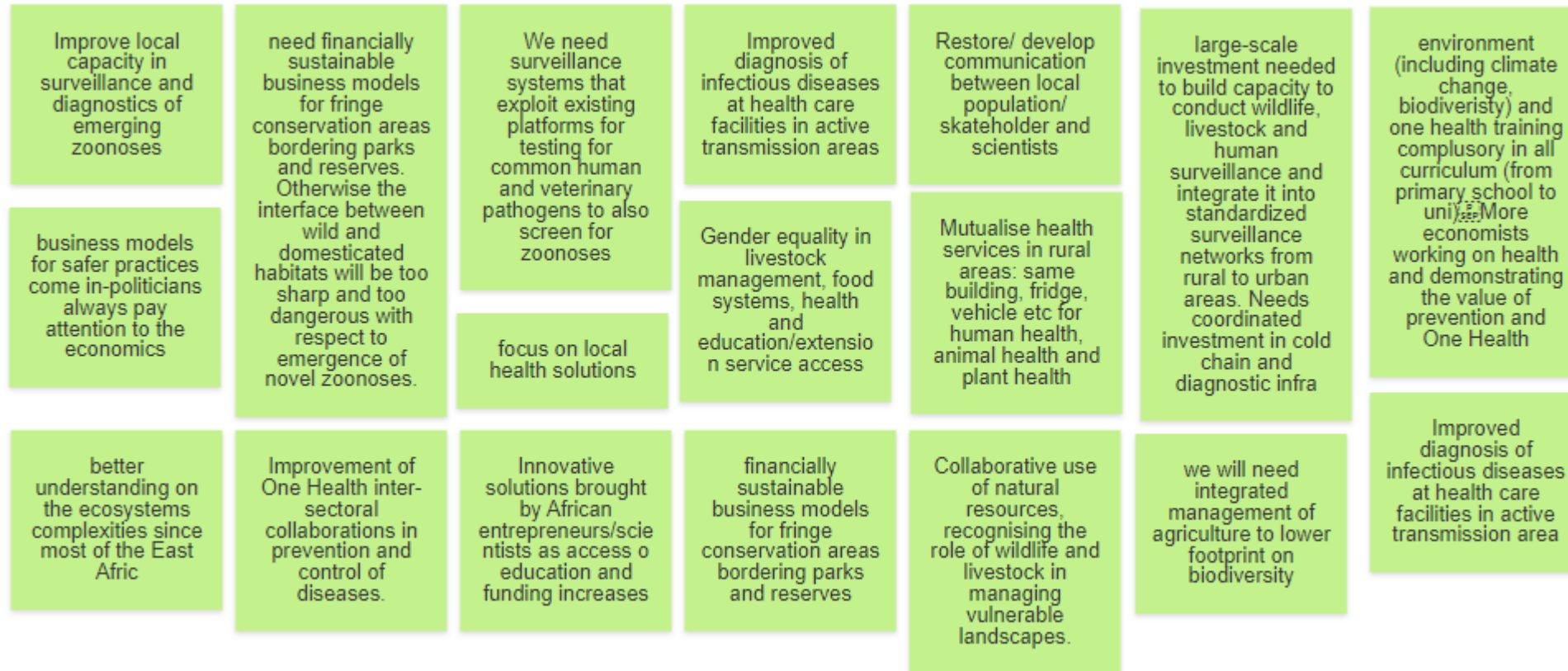


CLIQUEZ ICI

Other trees to complete :

1. Corruption : Governmental and other stakeholders
2. Difficulty to understand the situation and predict the future
3. Political will and long-term vision
4. Practioners (conservation ,Health, development) lack of mind shift for integrated approaches to health
5. Lack of collaboration among stakeholders / silos
6. Integrated approaches to poverty (including health, nutrition etc.) are missing (locally, nationally)
7. Lack of information / Communication / Trust and circularity
8. Root cause of problem (growing consumerism) not addressed

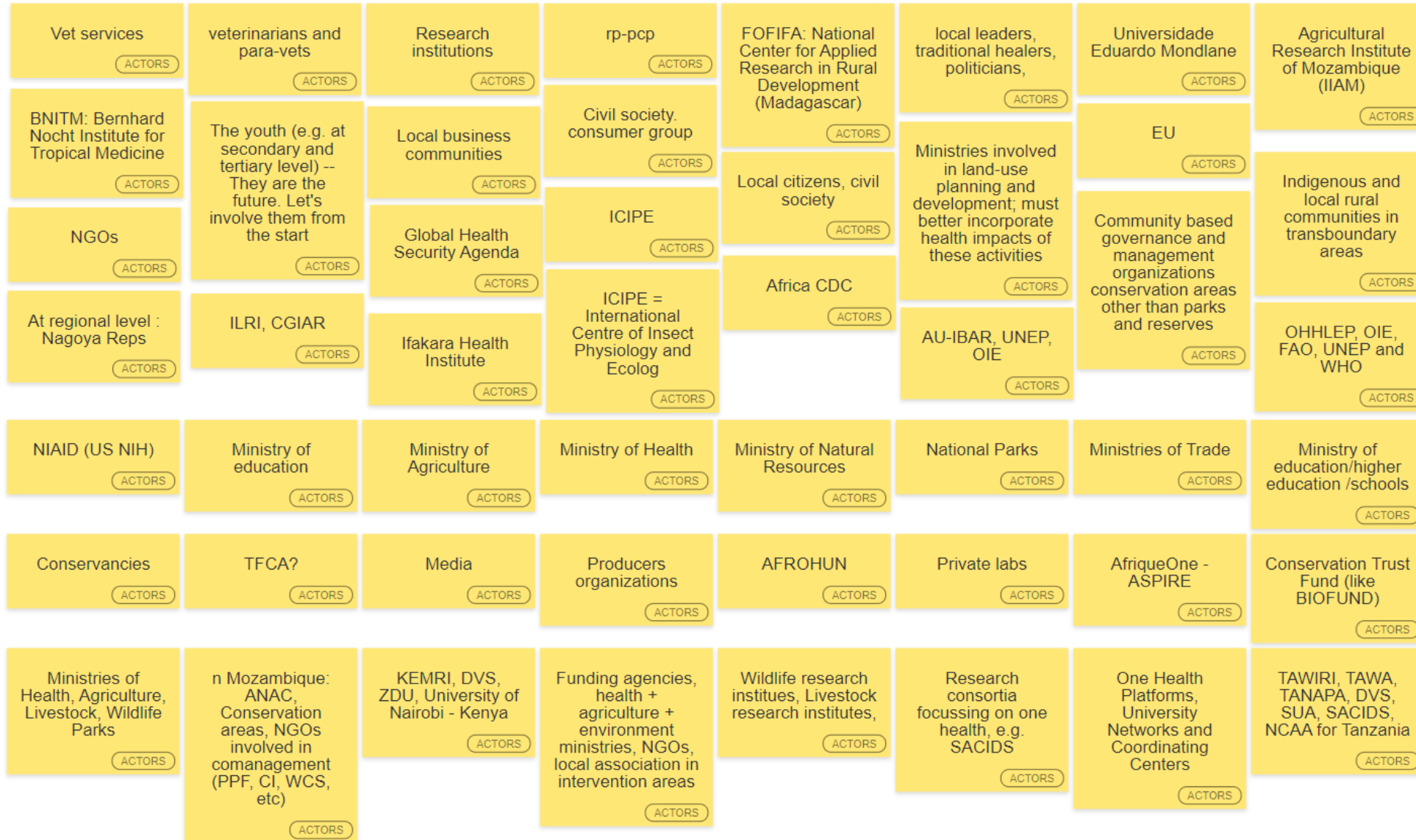
SOLUTIONS - How to solve it: what changes/impacts are expected?



A decorative graphic in the top-left corner of the slide. It features three overlapping circles: a white one in the center, an orange one to its right, and a blue one to its left. Small colored dots (orange and blue) are placed at the intersections of the circles.

Actors & Initiatives

Actors – Important stakeholders for PREZODE



Initiatives – Which other initiatives (past, present, future) deal with similar issues?

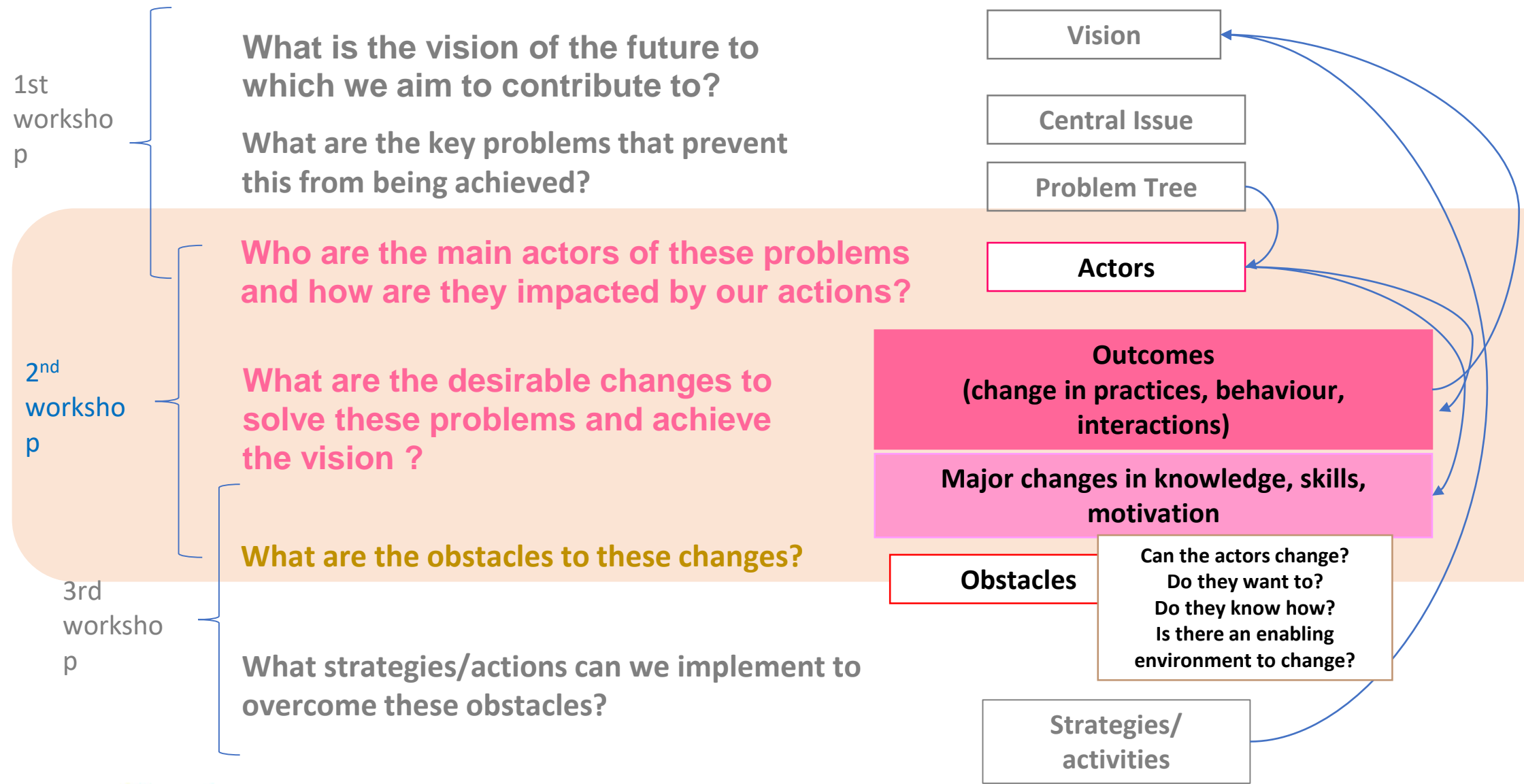
International & Multi regional levels

Name of the INITIATIVE	THEME	LEAD BY	REGION/COUNTRY	DATE	WEB SITE
SWM (sustainable wildlife meat)	Major international initiative that aims to improve wildlife conservation and food security.	FAO, AFD, CIRAD, EU	Central, Southern Africa and Madagascar	2018-2024	https://www.swm-programme.info/
PACMAN Project	Develop sustainable management tools for zoonotic diseases	AFD	Zimbabwe	2020-2023	
OHRECA: One Health center for Africa	improve the health of humans, animals and ecosystems through capacity building, strengthening of local, regional and global networks and provision of evidence-based policy advice on One Health in sub-Saharan Africa	ILRI	sub-Saharan Africa	2020-2025	
Horizon Europe (HORIZON) - CL6-2021-BIODIV-01-11	What else is out there? Exploring the connection between biodiversity, ecosystems services, pandemics and epidemic risk	EU	Europe / Global	2021-2024	
Afrique One - Aspire	A pan-African research consortium for capacity building in "One Health". Collaborating with 21 institutions from 14 African and European countries, its research focuses on ecosystem and population health by broadening disciplinary, sectoral, linguistic, cultural and geographic boundaries	CSRS, NIMR, IHI, NMIMR, SUA, IRED, NM-AIST, Beca/ILRI, EISMV	Africa	2016-2021	http://afriqueoneaspire.org/
GDRI-SUD	An International Scientific Coordination Network – South (GDRI-Sud) is a scientific coordination network gathering French and foreign research teams in several countries, including at least one country from the global South.	IRD	Global South	2020-2025	https://en.ird.fr/international-scientific-coordination-network-south-gdri-sud
SACIDS project	Strengthening SACIDS Expert Support to Regional COVID-19 Emergency Preparedness in Southern, Central and East Africa	Skoll Foundation	Democratic Republic of Congo (DRC), Mozambique, Tanzania and Zambia	2020-2021	http://www.sacids.org/projects/
Zoonotic and Emerging Diseases / ZooLinK	The goal of ZooLinK is to enable Kenya to develop an effective surveillance programme for zoonoses (meaning infectious diseases acquired through contact with animals or their products), which is, by design, integrated across both human and animal health sectors	Institute of Infection and Global Health, University of Liverpool, and ILRI	Kenya		http://www.zoonotic-diseases.org/who-we-are/about-zed/
Limpopo project	One Health One Limpopo project in Mozambique Under preparation (rehabilitation of the Limpopo National park)	AFD	Mozambique	2022-2026	
BUILD Uganda	Boosting Uganda's investment in livestock development	ILRI	Uganda	2020-2024	
LIPS-Zim project	Livestock Production System : Surveillance and control of Priority animal diseases in Zimbabwe (including Anthrax)	Directorate-General for International Cooperation and Development (DG DEVCO)	Zimbabwe	2020-2023	
ASACHA	Agroecology for Sustainable Aquaculture in a context of global CHAngeS - GDRI SUD	IRD / CIRAD	South-East Asia as in Africa	2020-2025	https://asacha-gdri.com/
CEIRS Program	The NIAID CEIRS program was a 14-year collaborative influenza research effort. The program concluded March 31st, 2021. The CEIRS website is maintained to provide access to information and resources generated by the CEIRS Network.	National Institute of Allergy and Infectious Diseases, National Institutes of Health	Uganda	ended in 2021	https://www.ceirr-network.org/
HEAL	One Health for Humans, Environment, Animals and Livelihoods	ILRI, CGIAR, USAID	Ethiopia, Kenya, Somalia	until 2022	
WCS Mozambique - Niassa Reserve	Increase the protection of Niassa National Reserve, a vast landscape in the north of the country, and improve the conservation status of its elephants through co-manage of the Reserve	WCS	Mozambique	since 2012	https://mozambique.wcs.org/Wild-Places/Niassa-National-Reserve/Conservation-Challenges.aspx
SABRENet	Southern African Bat research network, focused on bio surveillance including animals, human and environment - One Health	DTRA and South African research chair	RSA, Mozambique, Zimbabwe	2020-2025	
HUM ANI	Contacts among animals and humans and infections risk	IRD	Zimbabwe	2020-2025	https://en.ird.fr/project-hum-ani-contacts-among-
SMART for HEALTH	Monitoring system (cell-phone based open access) on wildlife health and interactions between wildlife and humans				

A decorative graphic in the top-left corner of the slide, featuring three overlapping circles in white, orange, and blue, with small colored dots at their intersections.

Next steps

What's next? – WORKSHOP 2 in September



BUT MEANWHILE....

SYNTHESIS

Send us your feedbacks !!

PROBLEM TREES

Please complete them
on klaxoon –
link in the email

JOIN the PREZODE ADVENTURE*

By signing the letter of intent which highlights emerging risks
issues and PREZODE values to address them

Prevention & Bottom up solutions

<https://prezode.org/Get-involved>



Preventing zoonotic
disease emergence

Annexes :

1. Vision : details Brain storming session
2. Obstacles

ANNEX 1 - Vision/issue linked with the current situation



ANNEX 1.1- Expected vision/impacts following the implementation of changes



ANNEX 2 – Obstacles/Challenges

What are the main obstacles/challenges to achieve this vision? Brain storming session

